

**RECLAMATION DISTRICT NO. 1601
TWITCHELL ISLAND
BOARD OF TRUSTEES MEETING
TUESDAY, FEBRUARY 20, 2024
9:00 AM
ENGINEER'S REPORT**

I. PROJECT FUNDING AGREEMENT TW – 21 - 1.2 TIMES PROJECT

A. Review the general status of the drill seed planting progress.

II. DISTRICT EXCAVATOR RECOVERY WITH INSURANCE COMPANY

A. Review plan and estimates for the temporary access road.

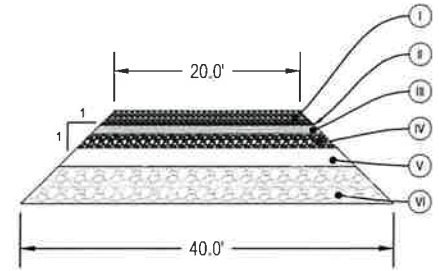
EXHIBIT A: Preliminary Plan and estimate for access road construction for the extraction of District Excavator.

III. SOLAR PROJECT

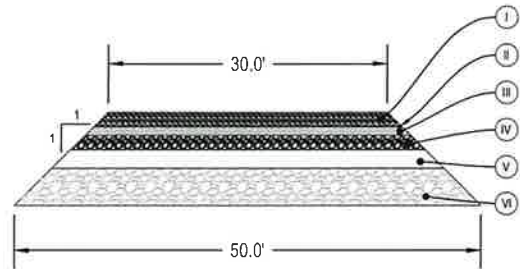
A. KSN is working to bring Kern Solar under contract (T & M \$9,800) to complete the structural design of the District's Solar Plant.

Exhibit A

FILE SPEC: P:\1110_Twitchell_Island\1080_Dist_Excavator_Retrieval_Ins_Claim\08_Civil\400_Plans\020_CAD_Sheets\240110_Base_Map_Excavator.dwg
 PLOT DATE: Jan 30, 2024 12:12pm

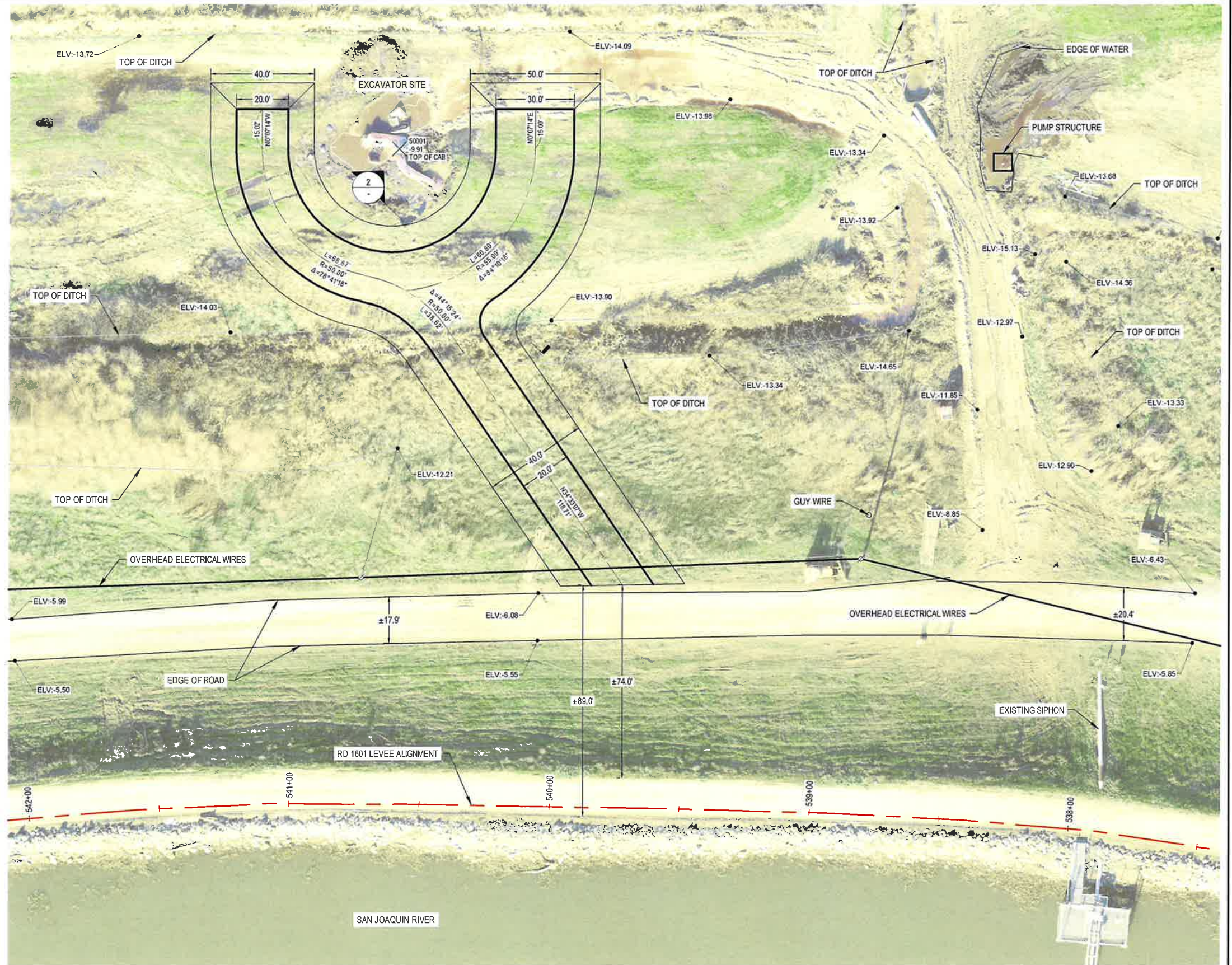


1 A.B. ROAD CROSS-SECTION 20 FT CROWN
N.T.S.



2 A.B. ROAD CROSS-SECTION 30 FT CROWN
N.T.S.

ELEMENT	MATERIAL	DEPTH (FT)	AREA (SF)	QTY (TN)
I	3/4 - INCH CLASS II A.B.	1.5		1044
II	GEOGRID		10877	
III	3 - INCH MINUS QUARRY ROCK	1.0		737
IV	12 - INCH MINUS QUARRY ROCK	1.5		1257
V	18 - INCH MINUS QUARRY ROCK	2.0		1874
VI	24 - INCH MINUS QUARRY ROCK	4.0		4429
TOTAL:		10.0	10877	9341



KSN inc.
KJELDEN SINNOCK NEUDECK
 CIVIL ENGINEERS & LAND SURVEYORS
 www.ksninc.com

711 N. Pershing Avenue
 Stockton, CA 95203
 209-946-0268

1550 Harbor Blvd., Suite 212
 West Sacramento, CA 95691
 916-403-5900

RECLAMATION DISTRICT 1601
 TWITCHELL ISLAND
 SACRAMENTO COUNTY, CA
 EXCAVATOR LOCATION EXHIBIT

DRAWING SCALE
 1" = 20'

ORIGINAL DRAWING SCALE
 0 1/2" 1"

EXHIBIT NO.
A

PAGE NO.
1

ELEMENT	MATERIAL	DEPTH (FT)	AREA (SF)	QTY (TN)
I	3/4 - INCH CLASS II A.B.	1.5		1044
II	<i>GEOGRID</i>		10877	
III	3 - INCH MINUS QUARRY ROCK	1.0		737
IV	12 - INCH MINUS QUARRY ROCK	1.5		1257
V	18 - INCH MINUS QUARRY ROCK	2.0		1874
VI	24 - INCH MINUS QUARRY ROCK	4.0		4429
	TOTAL:	10.0	10877	9341

20' CROWN AREA (SF)	30' CROWN AREA (SF)	20' CROWN QTY (TN)	30' CROWN QTY (TN)	20' CROWN CONTINGENCY (10%)	30' CROWN CONTINGENCY (10%)	COST (USD)
		578	371	58	37	\$ 52,201
6679.2	4197.6	-	-	-	-	\$ 21,754
		403	267	40	27	\$ 44,240
		713	430	71	43	\$ 75,401
		1076	628	108	63	\$ 149,926
		2581	1445	258	144	\$ 354,295

Cost: \$ 697,816

Mobilization (5%) \$ 34,890.80

Contingency (15%) \$ 109,906.03

Total Cost: \$ 842,613